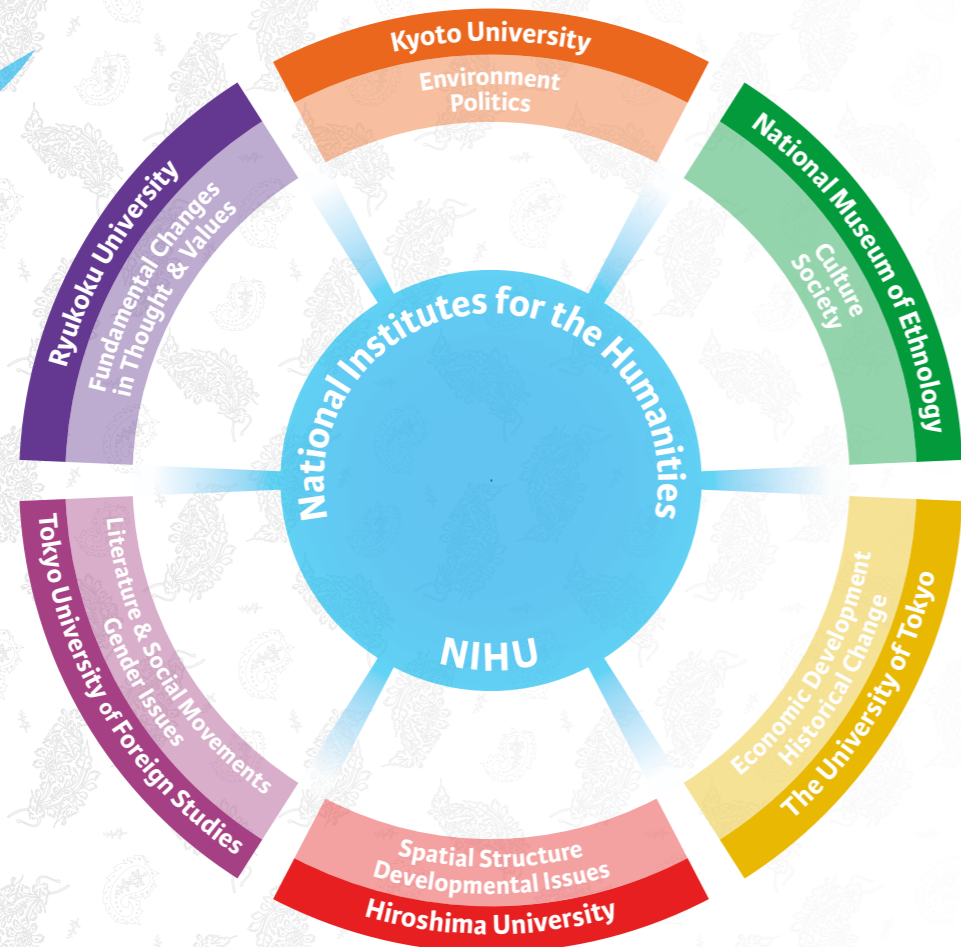


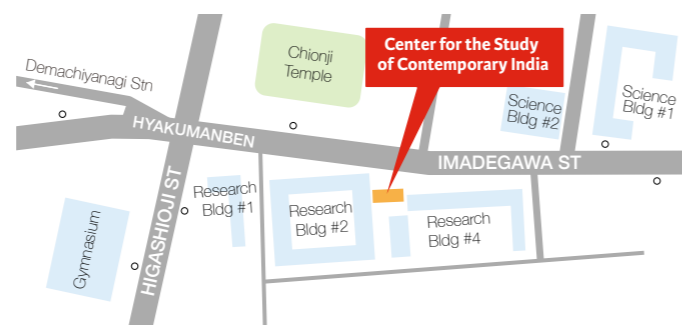
National Institutes for the Humanities of Japan (NIHU) Program  
**Contemporary India Area Studies Network**



**INDAS Portal Site**  
 For links, latest information  
 and a digital copy of this document  
<http://www.indas.asafas.kyoto-u.ac.jp/portal/>

NIHU Program for Contemporary India Area Studies  
 Central Hub at Kyoto University  
**The Center for the Study of Contemporary India**  
 Graduate School of Asian and African Area Studies  
 Kyoto University

Yoshida-Honmachi, Sakyo-ku, Kyoto 606-8501, JAPAN  
 TEL 075-753-9627 FAX 075-753-9655  
 URL <http://www.indas.asafas.kyoto-u.ac.jp/>  
 E-mail [indas\\_office@asafas.kyoto-u.ac.jp](mailto:indas_office@asafas.kyoto-u.ac.jp)



*National Institutes for the Humanities of Japan (NIHU) Program*

# Contemporary India Area Studies

NIHU Program for Advancing Area Studies

# INDAS

April 2015



## Contemporary India Area Studies

National Institutes for the Humanities of Japan (NIHU) Program

The purpose of Contemporary India Area Studies (INDAS) at the National Institutes for the Humanities (NIHU) is to foster a comprehensive understanding of the dynamism of contemporary India and South Asia and to establish academic perspectives and methodologies that can provide a vision for the future. INDAS also aims to develop an academic network and environment that enables researchers to conduct nationwide and cross-border collaborative studies. Since 2010, INDAS has conducted a collaborative research project through a network of six centers: Kyoto University (the central hub), the National Museum of Ethnology, The University of Tokyo, Hiroshima University, Tokyo University of Foreign Studies, and Ryukoku University. Since April 2015, the second phase of this project has been underway, building on the success of the first phase.

The major characteristics of the second phase are as follows:

First, given that a national collaborative research network with six centers was established during the first phase, our current goal is to strengthen international collaboration with institutions and individuals overseas. The National Museum of Ethnology has become a secondary hub, providing support to the central hub (Kyoto University) mainly in the field of international collaboration.

Second, we are carrying out a comprehensive study of the whole of South Asia, including Pakistan, Bangladesh, Sri Lanka, Nepal, Bhutan, and the Maldives. Although India dominates South Asia in economic and population terms, the region has historically enjoyed a strong sense of unity, which continues until the present day. The countries of South Asia have close and long-established political, economic, social, and cultural relationships. This context requires studies that put the whole of South Asia into perspective.

Third, although we exist to promote a comprehensive understanding of contemporary India and South Asia, we aim to expand this remit by encouraging solution-oriented approaches to the regional problems. Studies that aim to solve actual problems can make an important intellectual contribution, deepening our understanding of the nature and causes of those problems from the perspective of interdisciplinary area studies. With accelerated economic development, South

Asia has also experienced social and cultural transformations. These changes have made various existing socioeconomic problems more serious, in addition to producing new problems. There continue to be both new and historical tensions within South Asia and between the region and other parts of the world. Given that Japan, more than ever before, needs to respond properly to accelerated globalization, we must take seriously the dynamics within and beyond South Asia. In order to promote problem-solving oriented research, the second phase will focus on the theme, 'Structural Transformation in Globalising South Asia: Comprehensive Area Studies for Sustainable, Inclusive, and Peaceful Development'. We aim to promote studies related to the three agenda items described in this sub-theme.

The importance of historical perspective in helping to understand the current situation cannot be overemphasized. It is impossible to solve actual problems in the real world without having deep insight into their origins and context. For this reason, the second project will also focus on historical studies that connect past with present.

Finally, the second phase will promote collaboration between natural science and human and social sciences. In contrast to most area studies conducted abroad, which focus exclusively on the human and social sciences, area studies in Japan has, from the start, incorporated the natural science. We will maintain and exploit this advantage in developing INDAS area studies.

We are grateful for the cooperation of all who have participated in the first phase, and we would like to invite even more individuals and institutions to take part in second phase collaborations. At the same time, we look forward to receiving increased support from a broad section of society beyond academia.



Convener  
Koichi Fujita

## The University of Tokyo (TINDAS)



Director  
Tsukasa Mizushima

The Center for the Study of Contemporary India at the University of Tokyo (TINDAS) will collect and analyse basic documents related to the Indian economy and associated historical changes, while organizing and sharing analytical achievements at international conferences, to which we will invite overseas researchers engaged in leading research in other parts of the world. Another goal is to build a database and to create a research infrastructure.

All members will participate and make contributions to a research group focusing on the theme, 'Economic Development and Historical Change in India'. By analysing data from a wide range of angles, TINDAS will examine the social changes associated with economic growth over a long period of time, in order to create a vision of future socio-economic development.

We aim to establish a permanent research base by creating a research infrastructure that many individuals can use even after this project is completed. For example, we plan to contribute historical records and map data groups to the University's Asian Library, now under construction.

Department of Indian Studies, Center for Evolving Humanities, Graduate School of Humanities and Sociology, The University of Tokyo

Research Topic:  
**Economic Development and Historical Change in India**

Research Group:  
**Economic Development and Historical Change in India**

The Center for the Study of Contemporary India (TINDAS), The University of Tokyo  
Room #416, Yayoi Sogo Bldg, 1-1-1, Yayoi, Bunkyo-ku, Tokyo 113-0032 JAPAN  
<http://www.u-tokyo.ac.jp/~tindas/>

## Hiroshima University (HINDAS)



Director  
Kazuo Tomozawa

The Center for Contemporary India Studies at Hiroshima University (HINDAS) will promote research into the drastically changing spatial structures of contemporary India and South Asia in relation to economic growth and related developmental issues. This research will focus on and explore the impact of various types of development (including economic, resource, urban, rural, and social development) on the transformation of spatial structures. Through these studies, HINDAS will also contribute to an agenda of inclusive development and social sustainability by offering interpretations of issues from multiple perspectives.

Over the last half century, Hiroshima University has been continuously engaged in research on South Asia, particularly, India. Through the activities of the Research Center for Regional Geography (April 1986–March 2006) and the Center for Contemporary India Studies (since April 2010), we have now become one of Japan's major repositories of research and data on South Asia. To leverage this strength, the center will contribute towards building a network of international and national researchers, organising collaborative projects and training young researchers in cooperation with Hiroshima University's Leading Graduate Education Program (the 'Taoyaka' Program), which aims to improve the level of education and research on South Asia.

The Center for the Study of Contemporary India  
Hiroshima University

Research Topic:  
**Spatial Structure and Developmental Issues in South Asia**

Research Group:  
**Basic Research on Spatial Structure and Developmental Issues in Contemporary South Asia**

The Center for Contemporary India Studies at Hiroshima University (HINDAS)  
1-1-1, Kagamiyama, Higashi-Hiroshima City, Hiroshima 739-8524 JAPAN  
<http://home.hiroshima-u.ac.jp/hindas/>

## INDAS Research Centers

### Kyoto University (KINDAS) Central Hub



Director  
Akio Tanabe

The Center for the Study of Contemporary India at Kyoto University (KINDAS) will serve as the central hub, organising and coordinating the collaborative research activities of the INDAS network. We will cooperate with the Graduate School of Asian and African Area Studies (ASAFAS) at Kyoto University, and will actively foster younger researchers in South Asian studies.

In order to achieve these purposes, Kyoto University has organized two research groups under the general theme, 'Environment and Politics in South Asia', while setting up a convener's office to provide overall coordination for INDAS activities. The first research group, which focuses on 'Population, Resources, and Environment in South Asia', aims to understand the interrelationships between nature and ecosystems, society and culture, and politics and economics, and how they have changed historically, employing a comprehensive, long-term perspective. The second research group, which concentrates on 'Democratic Politics and International Relations of South Asia', examines the nature of democratic politics in South Asia as a whole, and also promotes research on South Asia's international relations.

The Center for the Study of Contemporary India,  
Graduate School of Asian and African Area Studies, Kyoto University

Research Topic:  
**Environment and Politics in South Asia**

Research Group 1: **Population, Resources and Environment in South Asia**  
Research Group 2: **Democratic Politics and International Relations in South Asia**

The Center for the Study of Contemporary India at Kyoto University (KINDAS)  
Research Bldg. No. 2 Annex, Yoshida-honmachi, Sakyo-ku, Kyoto 606-8501 JAPAN  
<http://www.indas.asafas.kyoto-u.ac.jp/kindas/>

### National Museum of Ethnology (MINDAS) Secondary Hub



Director  
Minoru Mio

The Center for Contemporary India Area Studies at the National Museum of Ethnology (MINDAS) will function as a supporting hub for this network project, advancing the international activities of INDAS. Our missions include organising international symposiums, promoting English language publications on the achievements of the whole project, and arranging and supporting international academic exchange. We are also planning to construct a consortium of South Asian research centers around the world.

Through this research agenda, we will attempt to define characteristically South Asian forms of social resilience by understanding the dynamics of the global circulation of people, cultures, and South Asian values, as well as by analysing the particular characteristics of South Asian social relationships that have been maintained amidst rapid social change. Through this research, we intend to contribute to the academic and social discourse on the social risks resulting from meteoric globalization.

Our research results will be published as articles and books in both Japanese and English. Information will also be shared on the Internet, and we plan to make our database of digitalized research resources available to the public. In addition, we will use our center at the National Museum of Ethnology to collect and exhibit socio-cultural materials relating to South Asian Studies. We will foster young South Asian Studies scholars researching socio-cultural anthropology and other relevant disciplines by encouraging early-career academics to participate in our collaborative research.

The Center for Contemporary India Area Studies  
National Museum of Ethnology

Research Topic:  
**Culture and Society in South Asia**

Research Group:  
**Dynamics of Culture and Society in South Asia**

The Center for Contemporary India Area Studies  
at the National Museum of Ethnology (MINDAS), 10-1, Senri Expo Park, Suita City  
Osaka 565-8511 JAPAN, <http://www.minpaku.ac.jp/nifu/mindas/>

## Tokyo University of Foreign Studies (FINDAS)



Director  
Toshie Awaya

The Center for the Study of Contemporary India at Tokyo University of Foreign Studies (FINDAS) aims to integrate literature studies with historical, political, and social analyses of social movements that have become increasingly multi-layered and diversified. Using gender perspective as the axis, we aim to deepen our understanding of structural changes in contemporary South Asia. How are people building social ties within social movements, and how have those social ties changed? How does literature reflect social movements? Exploring even emotion and affection, we will try to get to the heart of structural change in South Asia. To advance these purposes, we will take full advantage of our University's unique strengths. These include not only the teaching of various South Asian languages, such as Urdu, Hindi, and Bengali, but also our long tradition of South Asian area studies since the Meiji Period. We boast of one of the largest collections of books written in various South Asian languages in Japan, as well as documents and historical materials related to South Asia. While systematically enhancing these collections of documents and historical materials, we aim to become one of the national centers of South Asian Area Studies, with world-class research resources. In addition to organizing collaborative studies within our network of national and international researchers, we aim to strengthen South Asian area studies by nurturing young researchers.

The Center for the Study of Contemporary India  
Tokyo University of Foreign Studies

Research Topic:  
**Literature, Social Movements, and Gender Issues in South Asia**

Research Unit 1: **Practice and Theory of Crisscrossed Social Movements: With Emphasis on Human Ties and Sentiments**  
Research Unit 2: **Social Transformations and Literature**

The Center for the Study of Contemporary India, Tokyo University of Foreign Studies (FINDAS)  
Room #700, TUFs Lecture Bldg. 3-11-1, Asahi-cho, Fuchu, Tokyo 183-8534, JAPAN  
<http://www.tufs.ac.jp/ts/cosiety/findas/>

## Ryukoku University (RINDAS)



Director  
Mitsuya Dake

The Center for the Study of Contemporary India at Ryukoku University (RINDAS) will promote research that integrates philosophy and religion, as well as norms, values, and social change in contemporary India and South Asia. Focusing on the rise of the Dalits, other low-caste groups, and religious minorities, we will conduct fieldwork to study aspects of social change embedded in people's living conditions, awareness, and sense of values, relating these to a wider framework of philosophical and religious history. Through these studies, we will try to identify the ideational and social forces of change in contemporary Indian and South Asian societies.

In addition, through international collaborations, we will strengthen our links with universities and research institutions based not only in South Asia, but also in Europe, the United States, and other Asian countries. Through relationships we have built with a great variety of academic institutions and organizations, we will further enhance the quality and scope of our network, and act as a center to collect and organize relevant publications and information.

The Center for the Study of Contemporary India  
Ryukoku University

Research Topic:  
**Fundamental Changes in Thought and Values in South Asia**

Research Group:  
**Fundamental Changes in Thought and Values in South Asia**

The Center for the Study of Contemporary India, Ryukoku University (RINDAS)  
67 Tsukamoto-cho, Fukakusa, Fushimi-ku, Kyoto 612-8577, JAPAN  
<http://rindas.ryukoku.ac.jp/>